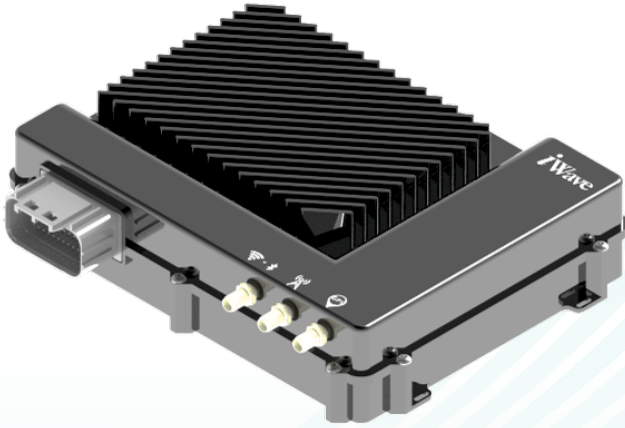


# iW-Rainbow-G41

## Telematics Gateway



The i.MX 8X Lite powered Telematics Gateway is built for rugged applications with extensive interfaces such as 4 CAN ports, RS232, RS485, Analog Inputs and Ethernet. With the support for various wireless technologies such as 4G, Wi-Fi and Bluetooth, Telematics Gateway is a vehicle diagnostics system that allows users to remotely monitor the key parameters of a vehicle. With the support for multiple protocols such as J1939, CANopen and ISO 15675-4, the gateway is suitable for wide range of applications.

### HIGHLIGHTS

- Powered by NXP i.MX 8
- Wireless Connectivity: 4G LTE Cat-4 / Cat-M1 / NB-IoT / Wi-Fi / Bluetooth
- Supports 4 CAN FD Ports
- Multitude of Protocols: ISO 15765-4 CAN, ISO 11898, J1939
- M.2 Expansion Connector: 5G / Wi-Fi 6
- Wired Interfaces: RS232 / RS485 / Automotive Ethernet / Analog Inputs
- High Accuracy GNSS Module & UWB Radio (Ultra Wide Band)
- Internal Battery Back-Up
- IP Enclosure for Rugged Installations

### APPLICATIONS

- |                        |                              |                    |
|------------------------|------------------------------|--------------------|
| • Heavy duty trucks    | • Passenger cars             | • Diesel Engine    |
| • Industrial machinery | • Forklifts/Cleaning Machine | • Fleet Management |

### Processor Core

CPU: NXP i.MX 8 DXL

RAM: 1GB LPDDR4 (Upgradable upto 2GB)

FLASH: 8GB eMMC Flash (Upgradable upto 64GB)

### Wireless Communication

Cellular: 4G LTE Cat 4, LTE Cat M1/NB1

Wi-Fi: 802.11 a/b/g/n/ac/ax \*

Bluetooth: BLE 5.0

Ultra-Wideband (UWB) wireless transceiver\*

### Interfaces

CAN: 4 CAN FD Ports

10/100 Mbps Ethernet

RS232/RS485\*

K - Line\* / LIN Interface\*

Analog Input x 2

GPIOs x 4 (2DI, 2DO)

### Software

Operating System: Linux 5.4.70

Protocol Stacks: ISO 15765-4 CAN, ISO 11898, J1939

### GNSS

GPS/GLONASS/BeiDou/Galileo

### Sensors

Accelerometer, Gyroscope, Magnetometer

Temperature Sensor

### Antenna

1 x GNSS, 1 x Cellular, 1 x WiFi/BLE

### Power

9V/12V/24V/36V

### Connectors

Enclosure Connector: 36 Pin Micro-fit

External connector: M.2 with Key B/Key E

### Enclosure

Protecting Class: IP67 with tamper detection

Mounting Options: Cable Tie Slots/Mounting Brackets

### Environmental

Operating Temperature: -40°C to +85°C  
(Excluding Battery)

Note: Optional features are not supported in default configuration.

## RELATED PRODUCTS



### Telematics Control Unit

TCU is built to power your connected mobility and telematics applications across a range of connected vehicles. It is integrated with multiple CAN ports, a wide range of protocol support and a multitude of wireless connectivity options.



### V2X Connectivity Hub

Integrated with C-V2X and DSRC technologies, the hybrid V2X Connectivity Hub provides as a scalable and modular platform. Designed to serve a plethora of V2X Applications, the V2X Gateway can be positioned as an On-Board Unit (OBU) or as a Road-Side Unit (RSU).

Note: iWave reserves the right to change these specifications without notice as part of iWave's continuous effort to meet the best in breed specification. The registered trademarks are proprietary of their respective owners.

#### INDIA

iWave Systems Technologies Pvt Ltd.  
#7/B, 29th Main, BTM Layout 2nd Stage,  
Bangalore - 560 076, INDIA.  
Ph: +91-80-26683700, 26786245  
mktg@iwavesystems.com

**iwavesystems.com**

#### JAPAN

iWave Japan Inc.  
8F Kannai Sumiyoshi Building, 3-29 Sumiyoshi-cho,  
Naka-ku, Yokohama Kanagawa, JAPAN  
Ph: 045-227-7626  
info@iwavejapan.co.jp

#### EUROPE

International Sales and Marketing Europe  
Venkelbaan 55 2908KE Capelle aan den  
Ijssel, The Netherlands  
Ph: +31 10 28403383  
info@iwavesystems.eu

#### USA

iWave USA  
1692 Westmont Ave.  
Campbell, CA95008 USA  
Ph: 408-206-5958  
info@iwavesystems.us